



Jorge Fernández Noya

ENDOLUMINAL BYPASS IN CLI PATIENT: LONG TERM RESULTS

Angiology and Vascular Surgery Department
University Clinical Hospital (CHUS)
Santiago de Compostela

Disclosure

Speaker name:

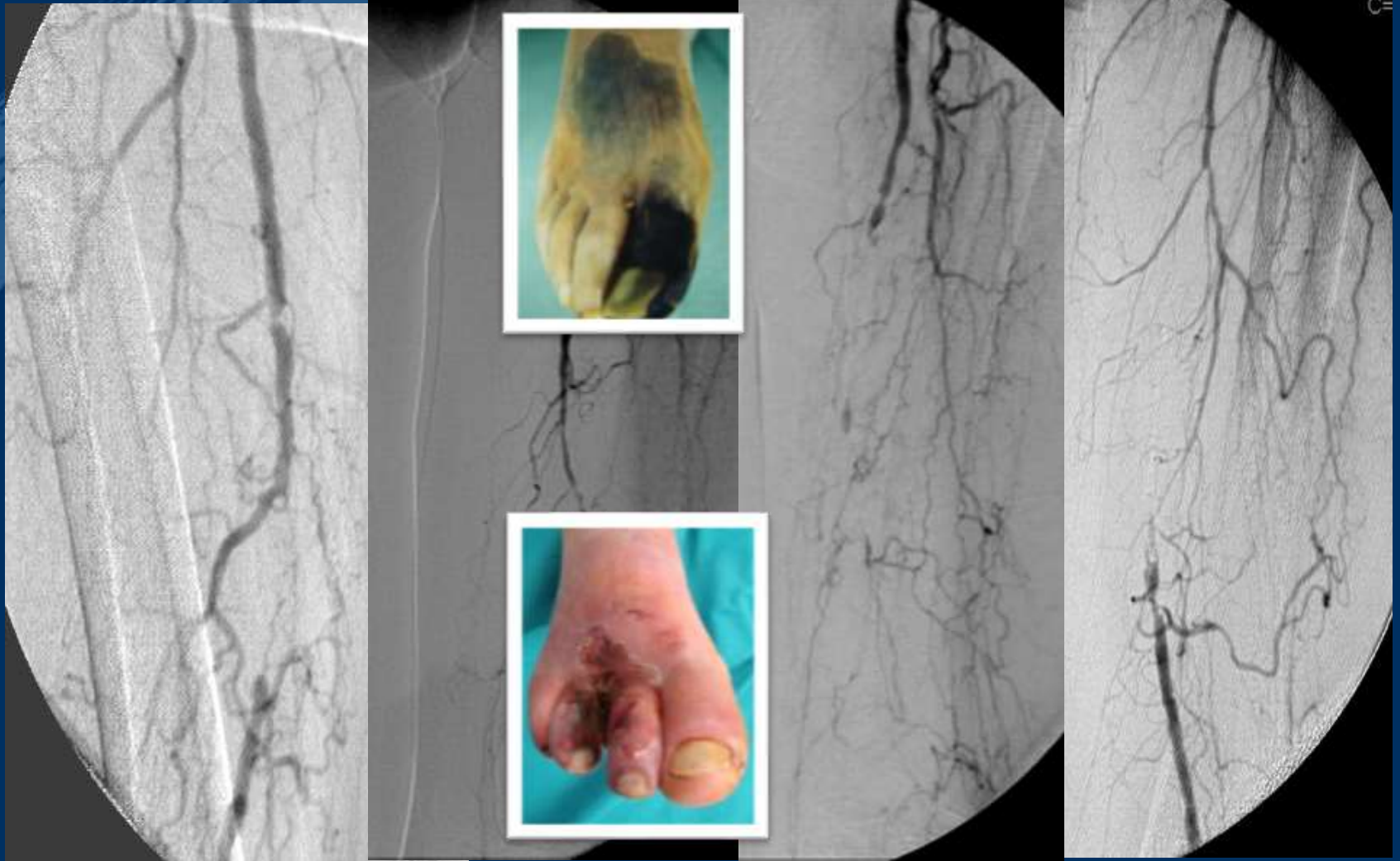
Jorge Fernández Noya

I have the potential conflicts of interest to report:

- Consulting: GORE, MEDTRONIC, TERUMO, JOTEC
- Employment in industry
- Stockholder of a healthcare company
- Owner of a healthcare company
- Other(s)

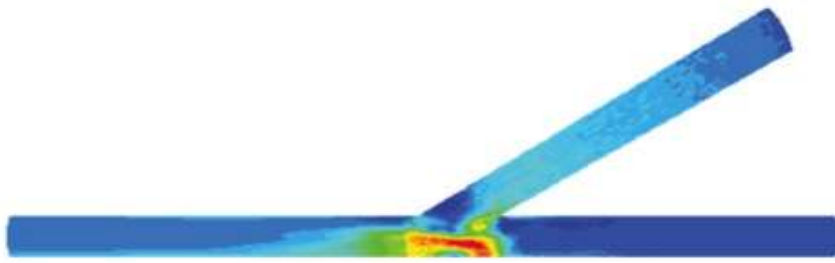
- I do not have any potential conflict of interest

Endoluminal bypass in CLI patient: long term results



Computational Fluid Dynamics (CFD)

Conventional End-to-Side Anastomosis



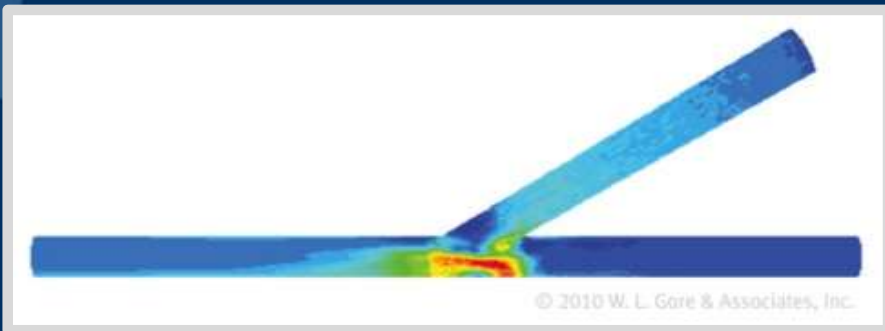
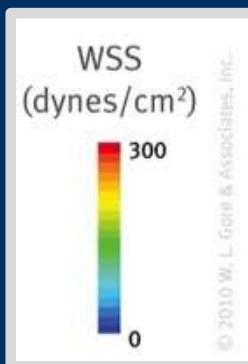
OPEN BY-PASS



ENDOLUMINAL BY-PASS

Computational Fluid Dynamics (CFD)

Endoluminal Anastomosis with the GORE® Hybrid Vascular Graft

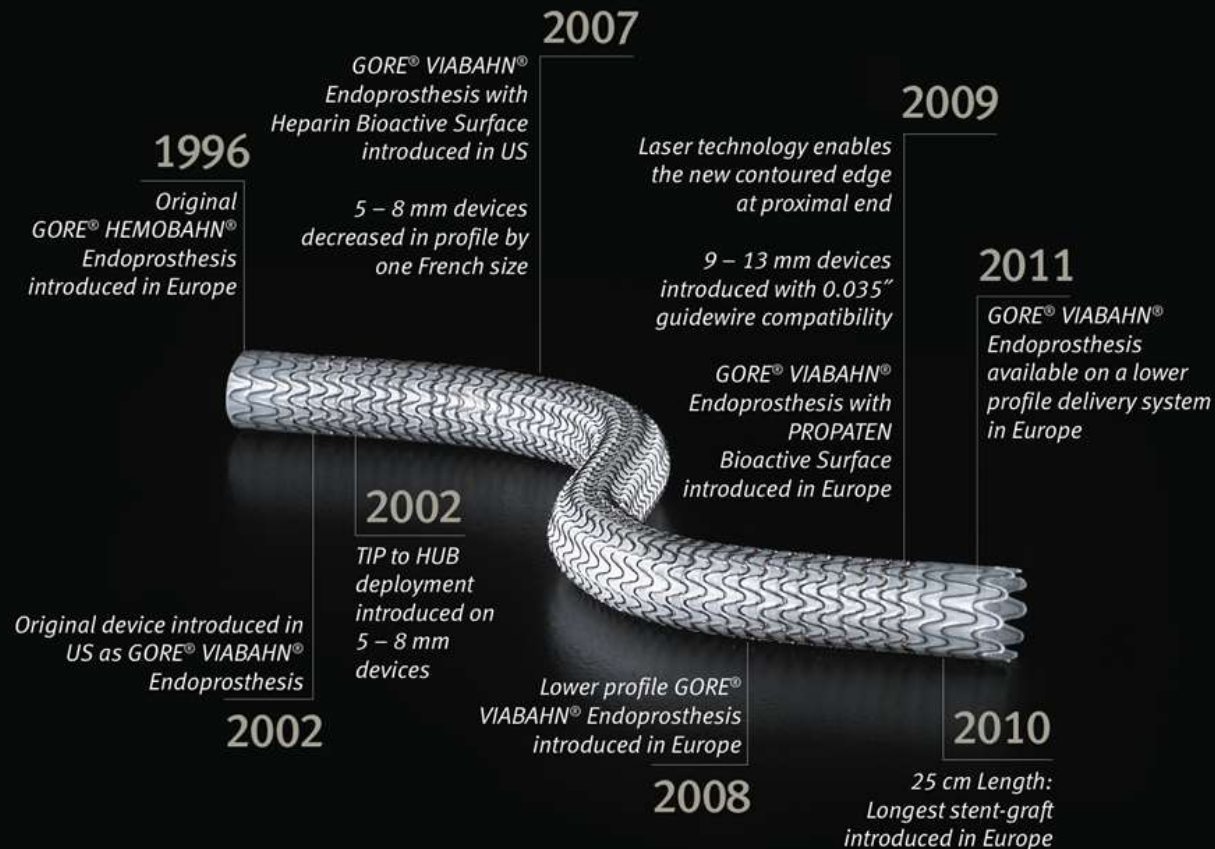


OPEN BY-PASS



Endoluminal bypass in CLI patient: long term results

VIABAHN



Endoluminal bypass in CLI patient: long term results

ENDOLUMINAL BY-PASS

Planning with Duplex-Scan or CT.

Angiogram: Looking for healthy vessel proximal and distal
(1cm)

Avoid Oversizing (<20%)

Don't cover genicular arteries

Post-dilatation inside the device.

Follow-up is critical



SERVIZO
GALEGO
de SAÚDE

Xerencia de Xestión Integrada
de Santiago de Compostela
Santiago de Compostela

Endoluminal bypass in CLI patient: long term results

Retrospective

June 2010-june 2015.

132 Patients (141 Limbs)

Average Follow up 601.22 days.

77.5 % male

Average age: 73.6 years old.





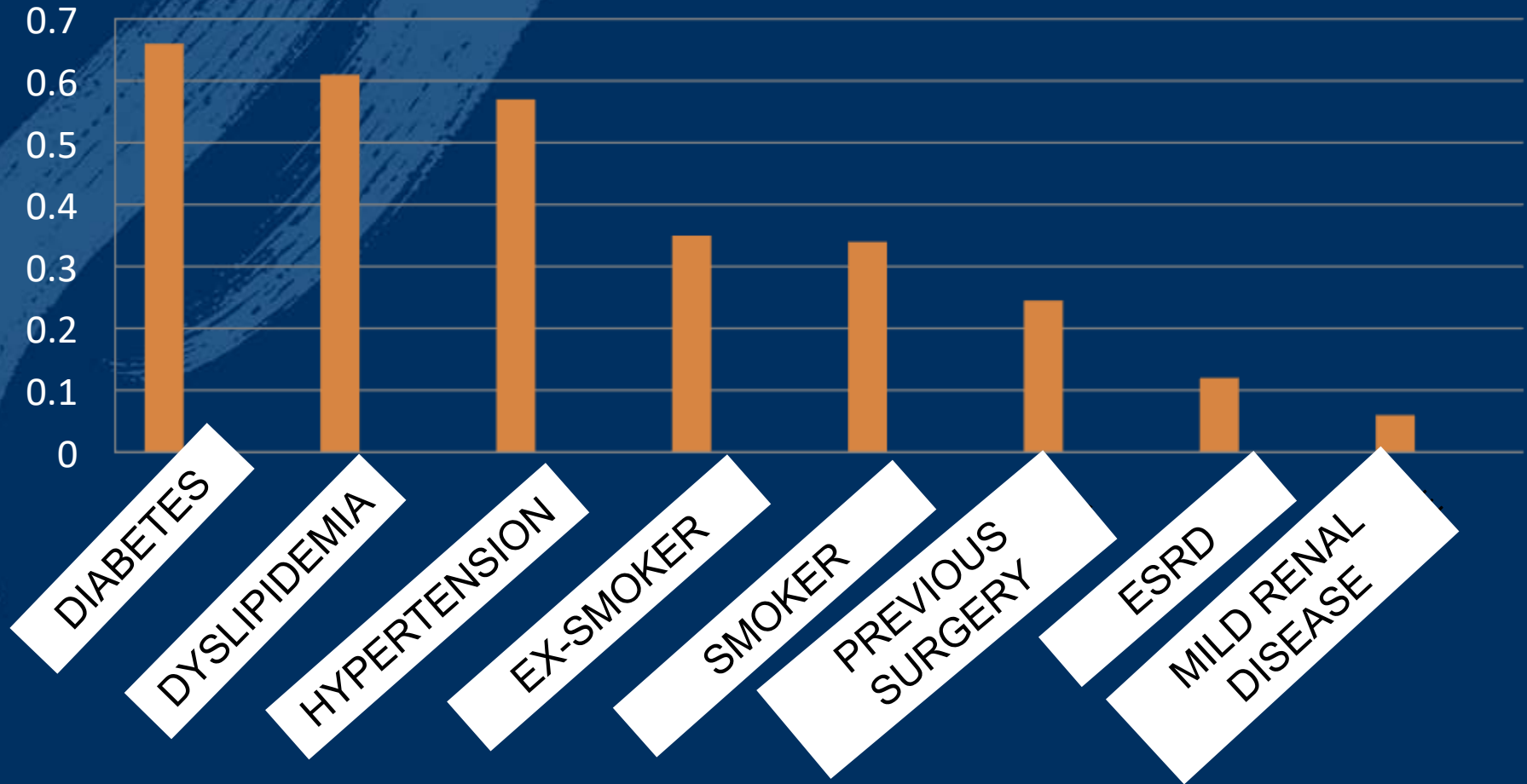
Endoluminal bypass in CLI patient: long term results

CATEGORY 4: ISCHEMIC REST PAIN	46.6%
CATEGORY 5: MINOR TISSUE LOSS	46.6%
CATEGORY 6: MAJOR TISSUE LOSS	6.8%





Endoluminal bypass in CLI patient: long term results



LESIONS CHARACTERISTICS

Occlusions		76.4%
Stenosis		23.6%
Calcification	Mild	35.6%
	Moderate	51.7%
	Severe	12.7%
Length	0-20 cm	43.2%
	>20 cm	56.8%
Run – off	0-1	44.9%
	2-3	53.1%

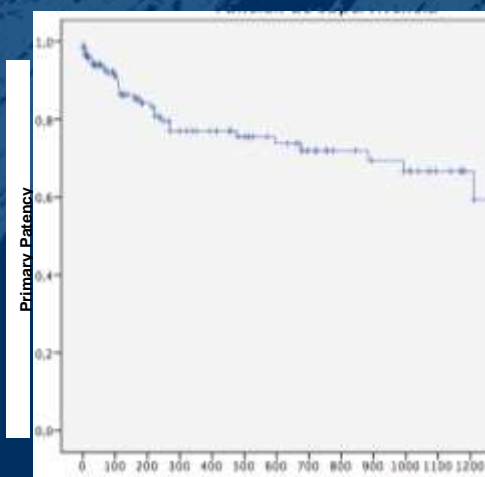


Endoluminal bypass in CLI patient: long term results

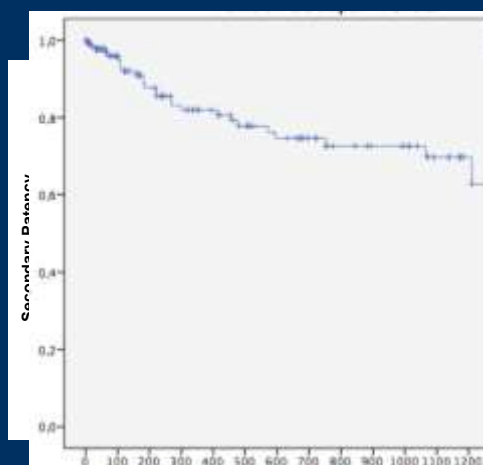
55.7% ASSOCIATED PROCEDURE

	ASSOCIATE PROCEDURE
■ DISTAL OPEN TREATMENT	2.9
■ DISTAL ENDO TREATMENT	20
■ PROXIMAL ENDO TREATMENT	2.9
■ PROXIMAL OPEN TREATMENT	30
■ NO TREATMENT	44.3

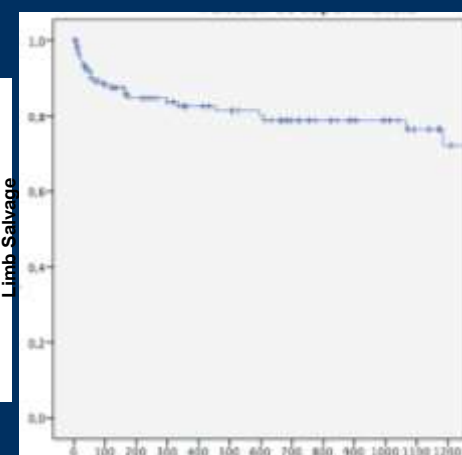
GLOBAL RESULTS



Time (Days)



Time (Days)



Time (Days)

	PRIMARY PATENCY	SECONDARY PATENCY	LIMB SALVAGE
1 YEAR	77%	80.6%	82.6%
2 YEARS	71,9%	74,6 %	78.8%
3 YEARS	66.7%	69.7%	76.4%

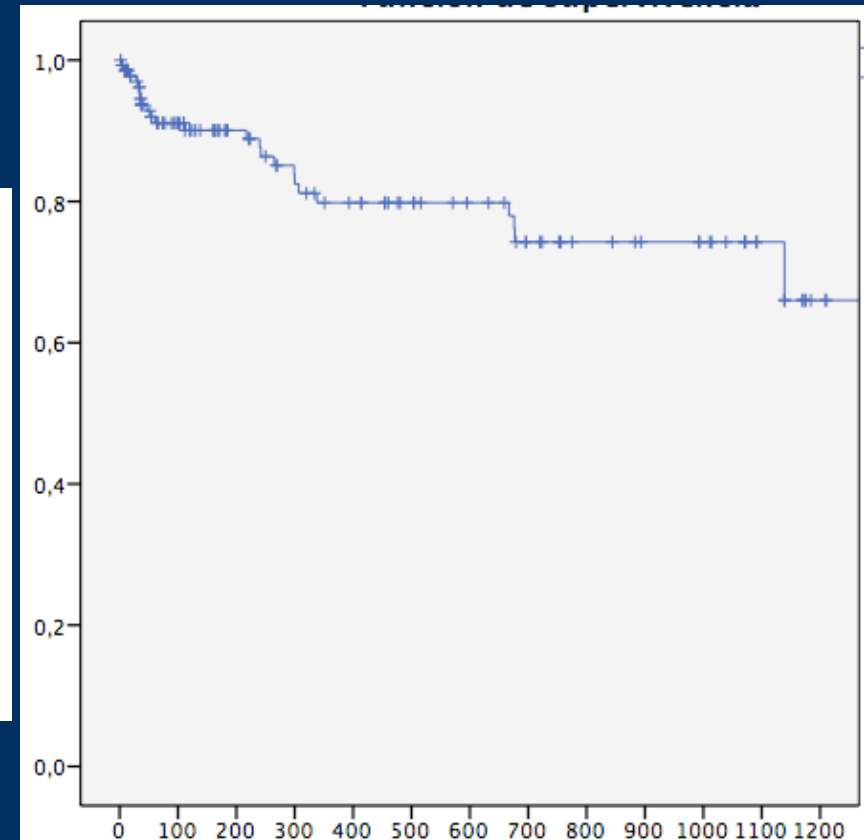


Endoluminal bypass in CLI patient: long term results

GLOBAL RESULTS

FREEDOM FROM TLR	
1 YEAR	79.8%
2 YEARS	74.3%
3 YEARS	70.1%

**FREEDOM FROM
TLR**

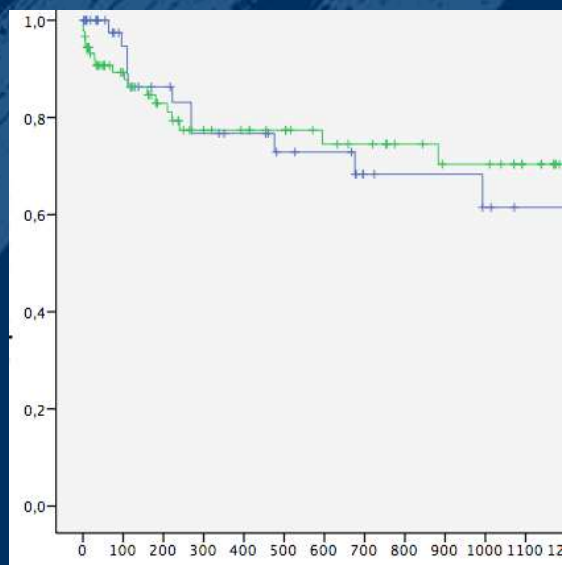


Time (Days)

Endoluminal bypass in CLI patient: long term results

DM

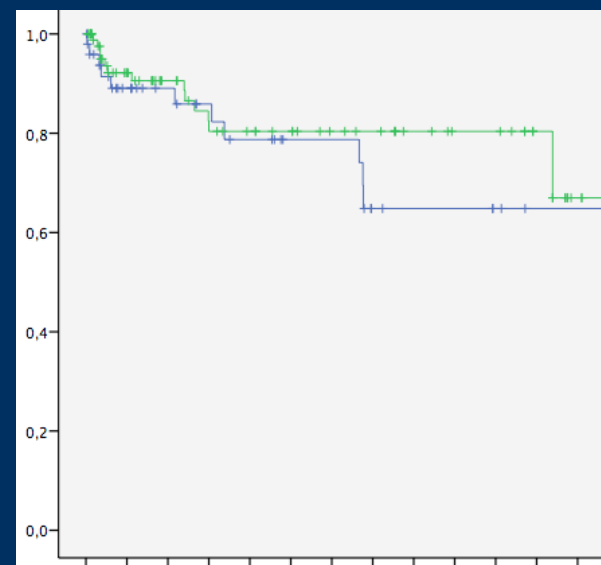
PRIMARY PATENCY



-DM

NON-DM

FREEDOM FROM TLR



PRIMARY PATENCY

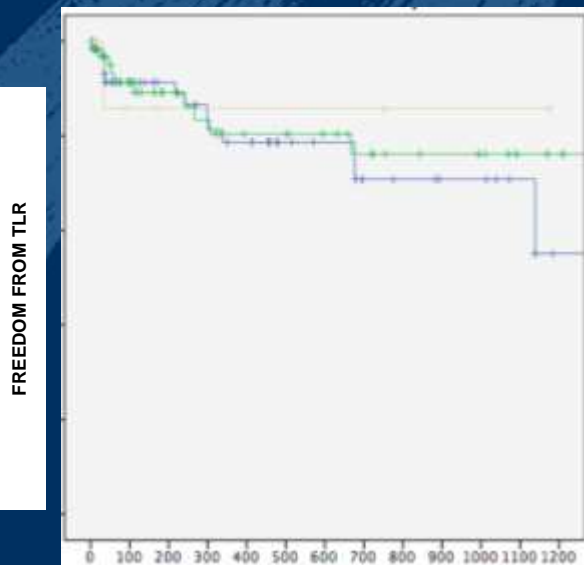
	DIABETICS	NON DIABETICS
1 YEAR	77.4%	76.7%
2 YEARS	74.5%	68.3%
3 YEARS	70.4%	61.5%

FREEDOM FROM TLR

	DIABETICS	NON DIABETICS
1 YEAR	77.4%	76.7%
2 YEARS	74.5%	68.3%
3 YEARS	70.4%	61.5%

Endoluminal bypass in CLI patient: long term results

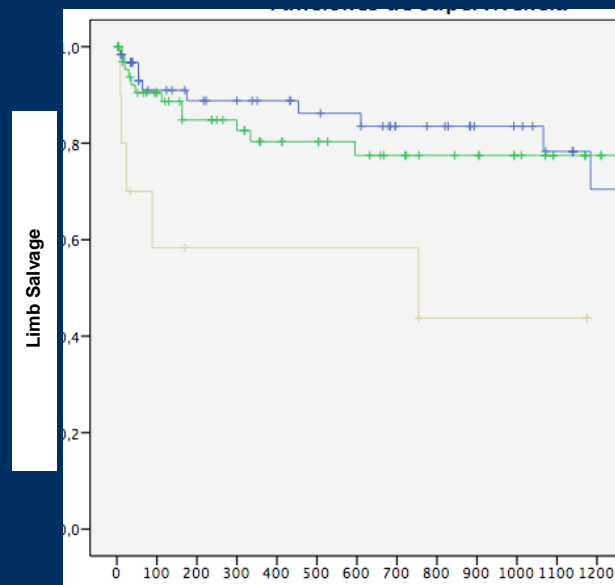
RUTHERFORD CATEGORY



--- Rutherford 4

--- Rutherford 5

--- Rutherford 6



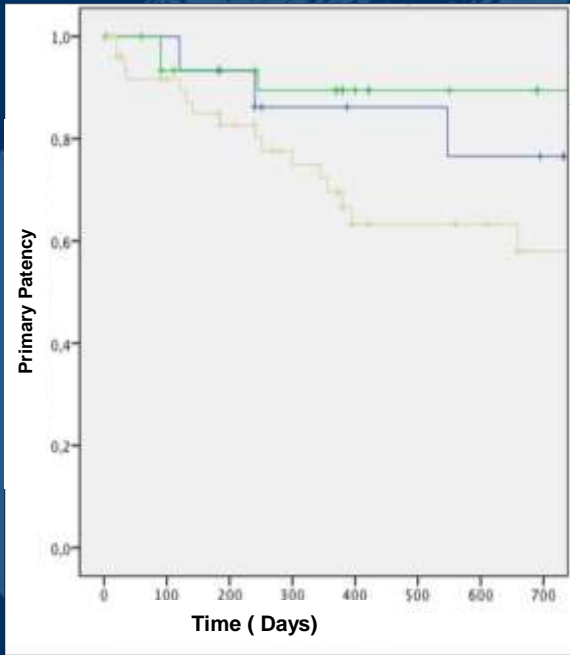
	Chi-cuadrado	gl	Sig.
Log Rank (Mantel-Cox)	8,819	2	,012

	FREEDOM FROM TLR		
	4	5	6
1 year	78.7%	80.4%	85.7%
2 years	70.4%	76.2.3%	85.7%
3 years	54.4%	76.2%	85.7%

	LIMB SALVAGE		
	4	5	6
1 year	88.8%	80.3%	58.7%
2 years	83.5%	77.5%	43.8%
3 years	80.7%	75.1%	43.8%

OUR EXPERIENCE (PREVIOUS DATA)

LENGTH



- < 10 cm---
- 10-20 cm----
- >20 cm

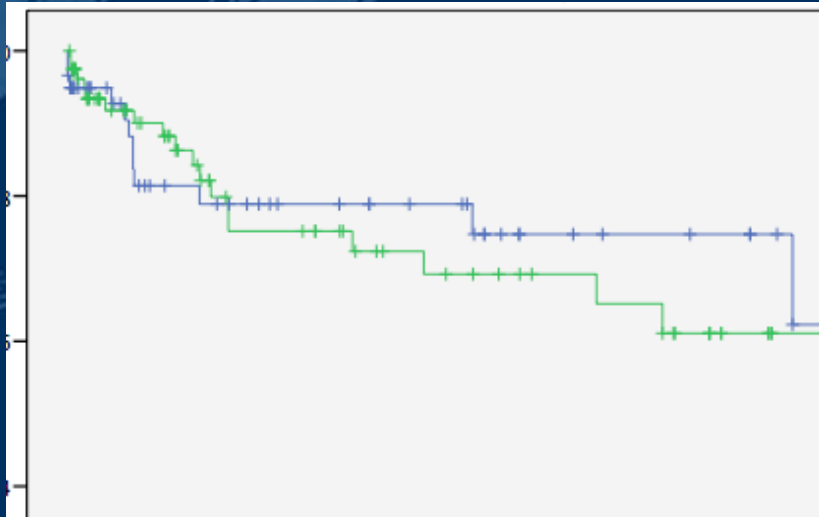
	PRIMARY PATENCY		
	<10 cm	10-20 cm	>20 cm
1 year	86.2%	89.4%	69.6%
2 years	76.6%	89.4%	58%

LENGTH > 20 Cm	
	Primary patency
1 STENT	79%
2 STENT	64.7%
3 STENT	66.7%

Endoluminal bypass in CLI patient: long term results

LENGTH

PRIMARY PATENCY



<20 cm-

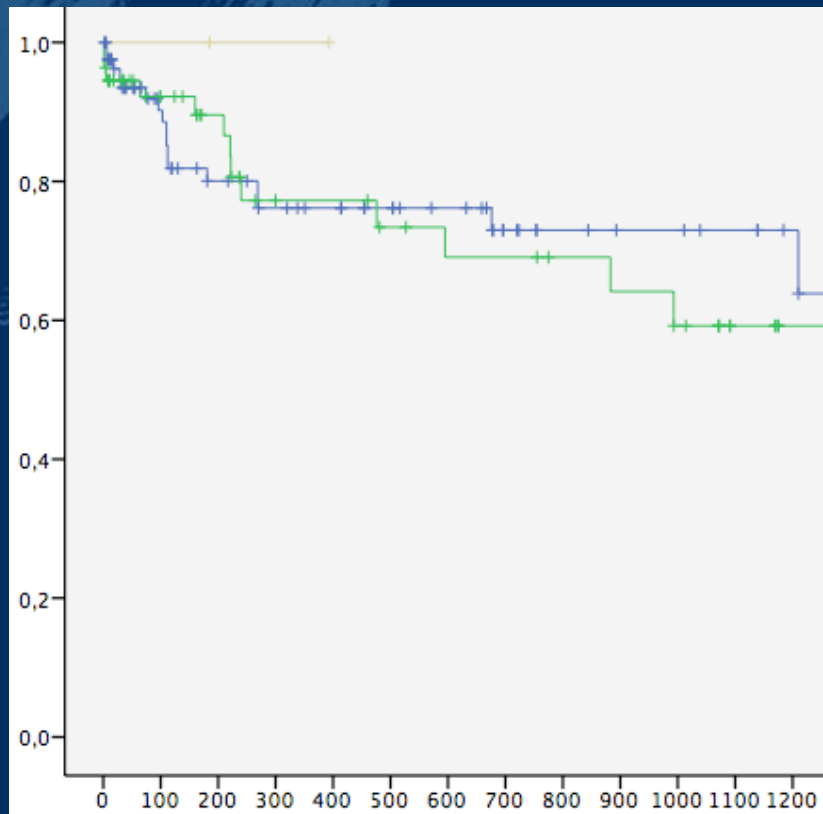
>20 cm

	PRIMARY PATENCY		
	<10 cm	10-20 cm	>20 cm
1 year	86.2%	89.4%	69.6%
2 years	76.6%	89.4%	58%

	PRIMARY PATENCY	
	<20 cm	>20 cm
1 year	78.9	75.2%
2 years	74.7%	69.2%
3 years	74.7%	61.8%

NUMBER OF STENTS

PRIMARY PATENCY



1 STENT-

>2 STENT

	PRIMARY PATENCY	
	1 stent	>2 stents
1 year	76.2%	77.3%
2 years	73%	69.1%
3 years	73%	59.2%



SUMMARY

Long SFA lesions and CLI are challenging cases

Endoluminal by-pass technique offers good results

250 mm graft to avoid the overlapping (ENDO-BY-PASS)

Correct sizing is key / Avoid Oversizing

Surveillance is critical

The edge-focal stenosis is easier to treat



SERVIZO
GALEGO
de SAÚDE

Xerencia de Xestión Integrada
de Santiago de Compostela
Santiago de Compostela

Endoluminal bypass in CLI patient:
long term results

THANK YOU!!!





Jorge Fernández Noya

ENDOLUMINAL BYPASS IN CLI PATIENT: LONG TERM RESULTS

Angiology and Vascular Surgery Department
University Clinical Hospital (CHUS)
Santiago de Compostela